



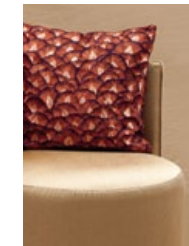
LIZZO

Fabric & Wallpaper Editor

2019 COLLECTION

LIZZO

2019 Collection



Holistic
pag. 2



Rituals
pag. 12



Akira
pag. 22



Guru
pag. 26



Eternal
pag. 28



Om
pag. 30





HOLISTIC

BASED ON THE CONCEPT OF NATURE AND HUMAN BEINGS AS A PART OF A WHOLE, THIS BEAUTIFUL COLLECTION CONSTANTLY REMEMBERS THE BALANCE IN LIFE







MIND 14 / MIND 08 / MIND 04



HAND PRINTED FABRICS
COEXIST WITH
EXQUISITE FIL COUPE JACQUARDS
AND GLAMOROUS EMBROIDERIES
WHILE ITS DESIGNS
AND COLOURS CONSTANTLY
COMMEMORATE THE
NATURAL WORLD







SUPREME 06



SUPREME 05 / HARMONY 06 / PAGODA 05

RITUALS

BEIJING'S FORBIDDEN CITY, THE IMPERIAL LIFE AND THE MYSTERY THAT SURROUNDED ITS OFFICIAL ACTS INSPIRE THIS ASTONISHING COLLECTION OF VELVETS, JACQUARDS, TOILE DE JOU AND ORNAMENTAL EMBROIDERIES THAT RECALL THE MAGNIFICENCE AND MAJESTY OF THE EMPERORS



SUPREME 09







HARMONY 01 / HARMONY 06 / HARMONY 05 / HARMONY 16



MAJESTIC 05





ASANA 12



ASANA 12 / ASANA 06

AKIRA

WITH ITS NAME MEANING "BRILLIANT" IN JAPANESE, AKIRA INTRODUCES TWO DIFFERENT SATIN WIDE-WIDTH PROPOSALS: AKIRA, A DOUBLE FACED LINEN IN WHICH WE CAN OBSERVE ITS MOST NATURAL TEXTURE; AND THE SOFT AND ELEGANT ASANA, A CUPRO SATIN WITH A LOVELY PEARLY TONE.



AKIRA 03 / ASANA 12 / AKIRA 09 / AKIRA 23 / AKIRA 13 / AKIRA 05





GURU

“MASTER” OR “GUIDE”. GURU IS A LONG PILE VELVET WITH SUBTLE SHINE. PRESENTED IN A WIDE COLOUR PALETTE PROVIDES A UNIQUE LOOK THAT, TOGETHER WITH ITS HIGH RESISTANCE, MAKES IT PERFECT FOR THE MOST EXIGENT PROJECTS



ETERNAL

THIS ELEGANT LONG PILE VELVET
WITH A SUBTLE SHINE RECEIVES
THE INSPIRATION
FROM THE FORBIDDEN CITY AS
AN ETERNAL RESTING PLACE FOR
EMPERORS, SYMBOL OF POWER AND
MAGNANIMITY





NAMASTE 09



MANTRA 06

OM

EVOKING CALMNESS AND EQUILIBRIUM, THIS SHEERS COLLECTION IS INSPIRED BY YOGA AND MEDITATION, AND COMES IN DIFFERENT SMOOTH NATURAL FIBERS SUCH AS WOOL, LINEN OR COTTON. ALL WRAPPED IN SOFT TONES THAT ALLOW THE LIGHT AND ENERGY FLOW THROUGH THE SPACES





RELAX 02



SURYA 06

LIZZO

LONDON

LIZZO UK - 17 The Design Centre Chelsea Harbour
Ground Floor Centre House - SW10 OXE - London, UK
Ph. +44 20 7823 3456
london@lizzo.net

MADRID

LIZZO - C/Castelló, 61 - 28001 Madrid, Spain
Ph. +34 914 260 982
madrid@lizzo.net

BARCELONA

LIZZO - C/ Roselló, 212 - 08008 - Barcelona, Spain
Ph. +34 637266449
barcelona@lizzo.net

MUNICH

GEBRÜDER WEISHÄUPL - Schwanthalerstrasse 49, DE 80336 München, Germany
Ph. + 49 8954424862
manufaktur@weishaeupl-textil.de

AMSTERDAM

LOGGERE WILPOWER - Zuidereinde 49 - KL 'S-Graveland - 1243 Amsterdam, The Netherlands
Ph. +31 356565200
office@loggerewilpower.com

MILAN

B&B DISTRIBUZIONE - Via Enrico Toti, 4 - 20123 Milan, Italy
Ph. +39 02 57 30 20 69 / 02 57 30 88 98
info@bbdistribuzione.it

NEW YORK

D&D Building - Kravet Showroom - 979 3rd Avenue, Suite #324 - 10022 New York, USA
Ph. 212.421.6363
jay.podos@kravet.com

SYDNEY & MELBOURNE

WESTBURY TEXTILES
Ph. +61 2 9380 6644
info@westburytextiles.com

PARIS

IDO Show-Room -24 Rue Mayet - 75006 Paris
Ph. + 33 (0)1 47 34 38 61
Ido@Idodiffusion.Com

BEIJING

EUROART - Jianke Binguan, A2 Xinghua Road, Anwai Street, Chaoyang Dist. Beijing
Ph. +86 1084270361
Marketing@China-Euroart.Com

TOKYO

TOMITA TEXTILE - 6f-A/B Tokyo Design Center, 5-25-19 Higashi Gotanda
Sanagawa-Ku - 141-0022 Tokyo
Ph. + 81 3 5798 7481
Info@Tominet.Co.Jp

HEAD OFFICE

LIZZO - C/ Del Rublo, 63 P.I. Las Atalayas - 03114 Alicante, Spain
lizzo@lizzo.net

Art Director & Stylist Pete Bermejo
Photo Montse Garriga
Post-Production Eric Pamies
Graphic design Rossella Ferrario

www.lizzo.net

LIZZO

www.lizzo.net