



# LIZZO

WALLPAPER PANELS

DESIGNED BY  
ELENA CAROZZI



FRUIT OF THE FUSION OF THE PICTORIAL ARTWORK OF ELENA, AND THE CREATIVE EXPERIENCE AND "SAVOIR FAIRE" OF LIZZO IN THE WORLD OF INTERIOR DESIGN, A PERFECT SYMBIOSIS BETWEEN ART AND DECORATION IS CREATED, PRESENTING DIFFERENT PANEL PROPOSALS AND MAKING THE POETRY OF NATURE COME INSIDE OUR HOMES.

FROM A SERENE GAZE AT NATURE AND RICH MEDITERRANEAN VEGETATION, OUR LAST PROPOSAL IS BORN. INSPIRATION THAT ARRIVES THROUGH THE SCENTS, SHAPES AND COLOURS THAT SURROUND THE ARTIST AT HER STUDIO, HELPING TO BUILD THIS DELICATE AND ELEGANT COLLECTION OF WALLPAPER PANELS.



"COLOUR REACHES ITS FULL EXPRESSION, WHEN IT CORRESPONDS TO THE INTENSITY OF THE ARTIST'S EMOTION" .  
H. Matisse

EACH CORNER OF THE STUDIO NARRATES VISUAL PATHS, THROUGH COMPOSITIONS MADE OF RESEARCH ELEMENTS, OBJECTS, OPEN BOOKS, PAINTED FRAGMENTS.



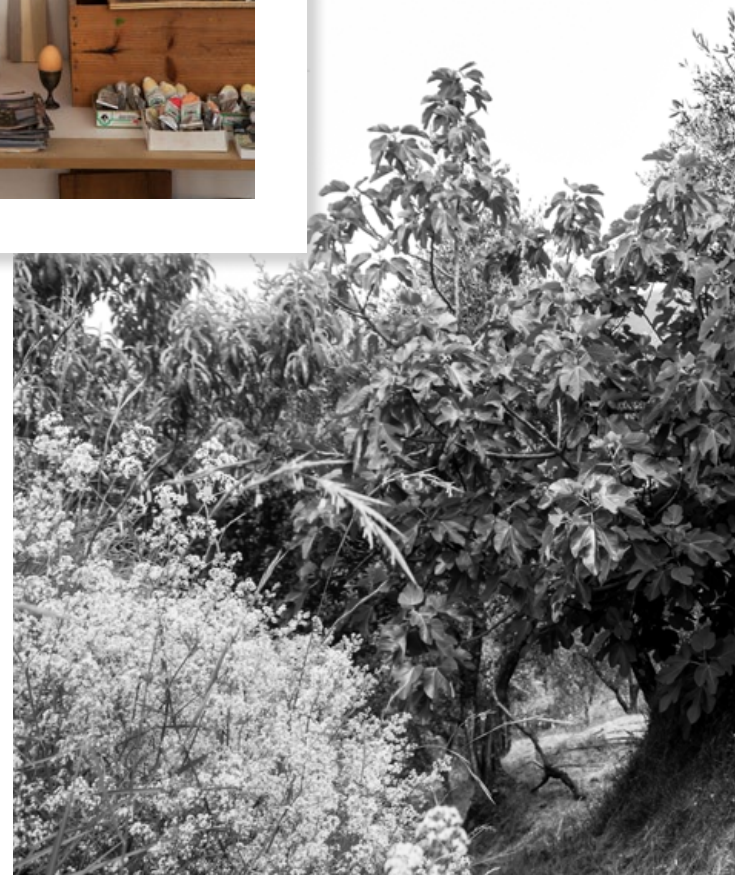
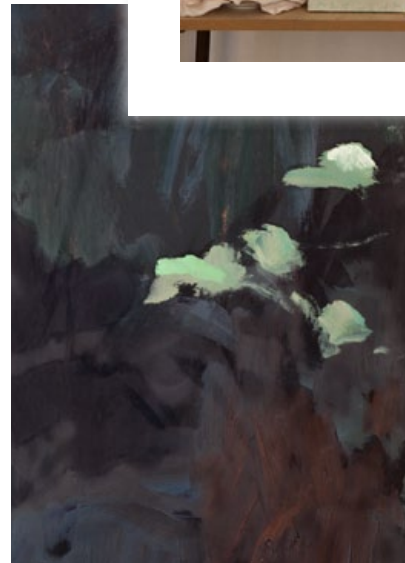
COLOURS OF ALL KINDS, PASTELS, GOUACHES, OILS, PIGMENTS, THEY BECOME INSTRUMENTS FOR EVERY SORT OF PICTORIAL EXPRESSION.

NATURE IS A BOUNDLESS SOURCE OF INSPIRATION. THE ARTIST OBSERVES NATURE, ITS LAWS AND ITS SIZES, TO REACH A FREE AND INSTINCTUAL DIMENSION.



THE ARTIST'S STUDIO IS THE PLACE WHERE ALL SUGGESTIONS TRANSFORM THEMSELVES AND ACQUIRE THEIR SHAPE THROUGH MATTER. NOTEBOOK FOR SKETCHES DRAWINGS, COLOURS, MATERIALS.

# inspirations



"THE PAINTING IS A SERIES OF AREAS OF COLOUR THAT ARE UNITED FROM ONE TO ANOTHER, FORM THE OBJECT, ELEMENT ON WHICH THE EYE RANGES WITHOUT OBSTACLES".



ELENA CAROZZI CREATES UNIQUE AND ORIGINAL PIECES OF HAND-PAINTED WALLPAPERS, A BLEND OF PAINTING AND DECORATIVE EXPERIENCE.



# castagno

THE VAST AND MAJESTIC CROWN OF THE CHESTNUT TREE ENTERS THE ROOM AND PERVADES IT WITH THE UNIQUE PERFUME OF NATURE. THE LEAVES' IRREGULAR INTERTWINING HOSTS BIRDS COMING FROM THE EAST. THE HOOPOE, THE ANCIENT BUTTERFLY BIRD, LIES ON THE LONG CHESTNUT TREE LEAVES AND, WITH ITS EMBROIDERED FEATHERS, FILLS WITH COLOUR THE COMPOSITION BEFORE OUR EYES.







# nespolo

A LIMITLESS LANDSCAPE. THE NESPOLO LEAVES' MATTER IS VAPORISED IN THE GOLDEN AND SILVER LIGHT. THE ROOM BECOMES AN "EN PLEIN AIR" SCENE, OPEN AND LUMINOUS.











# ventaglio

FAN AND FLOWERS, SOUND OF CASTANETS.

THIS DRAWING WAS INSPIRED BY THE SPANISH LANDS AND BY THE PASSION THAT  
MOVES THE COMPOSITION, PAINTED  
IN A FREE DANCE MADE OF COLOUR AND SUGGESTIONS.







# foglie di vite

IN THIS MOTIF, THE BEAUTY AND THE FREE STRUCTURE OF VINE LEAVES ARE EXPRESSED THROUGH THE GRACE OF PASTEL, WHICH TURNS INTO SIGN AND STAIN AT THE SAME TIME, INTO SHAPE AND COLOR. THE DIFFERENCE BETWEEN LINE AND SURFACE, BETWEEN DRAWING AND COLOUR, NO LONGER EXISTS.









# wild garden

A WALK INSIDE THE HEART OF A WILD GARDEN, LEFT FREE TO EXPRESS ITS FORM. NATURE IS THE INSPIRER OF THE PICTORIAL SIGN AND SHE TAKES US TO A CORNER OF PARADISE, ALL FOR US.











**WILD GARDEN 05**

REPEAT APROX. 280 X 300 cm  
ROLL WIDTH 70 cm  
ROLL LENGTH 3 m x 4 panels  
*Width x Length*



**WILD GARDEN 06**

REPEAT APROX. 280 X 300 cm  
ROLL WIDTH 70 cm  
ROLL LENGTH 3 m x 4 panels  
*Width x Length*



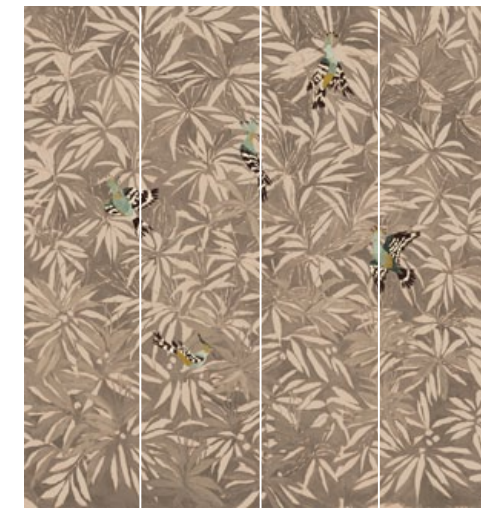
**WILD GARDEN 01 METALLIC**

REPEAT APROX. 272 X 300 cm  
ROLL WIDTH 68 cm  
ROLL LENGTH 3 m x 4 panels  
*Width x Length*



**CASTAGNO color 02**

REPEAT APROX. 280 X 300 cm  
ROLL WIDTH 70 cm  
ROLL LENGTH 3 m x 4 panels  
*Width x Length*



**CASTAGNO color 01**

REPEAT APROX. 280 X 300 cm  
ROLL WIDTH 70 cm  
ROLL LENGTH 3 m x 4 panels  
*Width x Length*



**FOGLIE DI VITE bronzo 21593**

REPEAT APROX. 280 X 300 cm  
ROLL WIDTH 70 cm  
ROLL LENGTH 3 m x 4 panels  
*Width x Length*



**FOGLIE DI VITE blu 21592**

REPEAT APROX. 280 X 300 cm  
ROLL WIDTH 70 cm  
ROLL LENGTH 3 m x 4 panels  
*Width x Length*



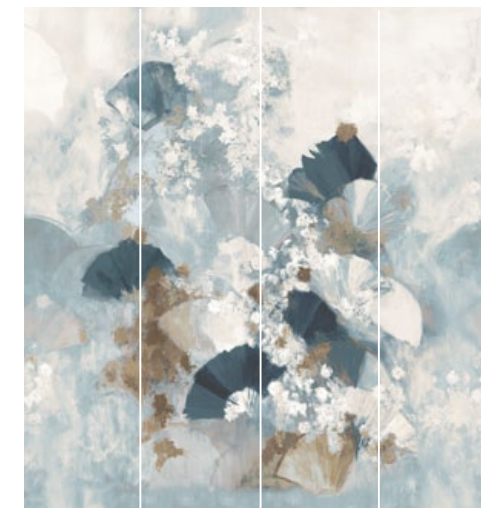
**FOGLIE DI VITE perla 21590**

REPEAT APROX. 280 X 300 cm  
ROLL WIDTH 70 cm  
ROLL LENGTH 3 m x 4 panels  
*Width x Length*



**VENTAGLIO color 02**

REPEAT APROX. 280 X 300 cm  
ROLL WIDTH 70 cm  
ROLL LENGTH 3 m x 4 panels  
*Width x Length*



**VENTAGLIO color 04**

REPEAT APROX. 280 X 300 cm  
ROLL WIDTH 70 cm  
ROLL LENGTH 3 m x 4 panels  
*Width x Length*



**NESPOLO color 01 METALLIC**

REPEAT APROX. 340 X 300 cm  
ROLL WIDTH 68 cm  
ROLL LENGTH 3 m x 5 panels  
*Width x Length*



**NESPOLO color 04 METALLIC**

REPEAT APROX. 340 X 300 cm  
ROLL WIDTH 68 cm  
ROLL LENGTH 3 m x 5 panels  
*Width x Length*



**NESPOLO color 06**

REPEAT APROX. 350 X 300 cm  
ROLL WIDTH 70 cm  
ROLL LENGTH 3 m x 5 panels  
*Width x Length*

MATCHING

USE & CARE



300



# LIZZO

## **LONDON**

LIZZO UK - 17 The Design Centre Chelsea Harbour  
Ground Floor Centre House - SW10 OXE - London, UK  
Ph. +44 20 7823 3456  
london@lizzo.net

## **MADRID**

LIZZO - C/ Castelló, 61 - 28001 Madrid, Spain  
Ph. +34 914 260 982  
madrid@lizzo.net

## **BARCELONA**

LIZZO - C/ Roselló, 212 - 08008 - Barcelona, Spain  
Ph. +34 637266449  
barcelona@lizzo.net

## **MUNICH**

GEBRÜDER WEISHÄUPL - Schwanthalerstrasse 49, DE 80336 München, Germany  
Ph. + 49 8954424862  
manufaktur@weishaeupl-textil.de

## **AMSTERDAM**

LOGGERE WILPOWER - Zuidereinde 49 - KL 'S-Graveland - 1243 Amsterdam, The Netherlands  
Ph. +31 356565200  
office@loggerewilpower.com

## **MILAN**

B&B DISTRIBUZIONE - Via Enrico Toti, 4 - 20123 Milan, Italy  
Ph. +39 02 57 30 20 69 / 02 57 30 88 98  
info@bbdistribuzione.it

## **NEW YORK**

D&D Building - Kravet Showroom - 979 3rd Avenue, Suite #324 - 10022 New York, USA  
Ph. 212.421.6363  
jay.podos@kravet.com

## **SYDNEY & MELBOURNE**

WESTBURY TEXTILES  
Ph. +61 2 9380 6644  
info@westburytextiles.com

## **PARIS**

IDO Show-Room -24 Rue Mayet - 75006 Paris  
Ph. + 33 (0)1 47 34 38 61  
Ido@ldodiffusion.Com

## **BEIJING**

EUROART - Jianke Binguan, A2 Xinghua Road, Anwai Street, Chaoyang Dist. Beijing  
Ph. +86 1084270361  
Marketing@China-Euroart.Com

## **TOKYO**

TOMITA TEXTILE - 6f-A/B Tokyo Design Center, 5-25-19 Higashi Gotanda  
Sanagawa-Ku - 141-0022 Tokyo  
Ph. + 81 3 5798 7481  
Info@Tominet.Co.Jp

## **HEAD OFFICE**

LIZZO - C/ Del Rublo, 63 P.I. Las Atalayas - 03014 Alicante, Spain  
lizzo@lizzo.net

*art direction* Rossella Ferrario  
*photo* Alessandra Ianniello  
*styling* Mariangela e Ginevra Callisti  
*post-production* Matteo Finazzi

[www.lizzo.net](http://www.lizzo.net)





LIZZO

[www.lizzo.net](http://www.lizzo.net)